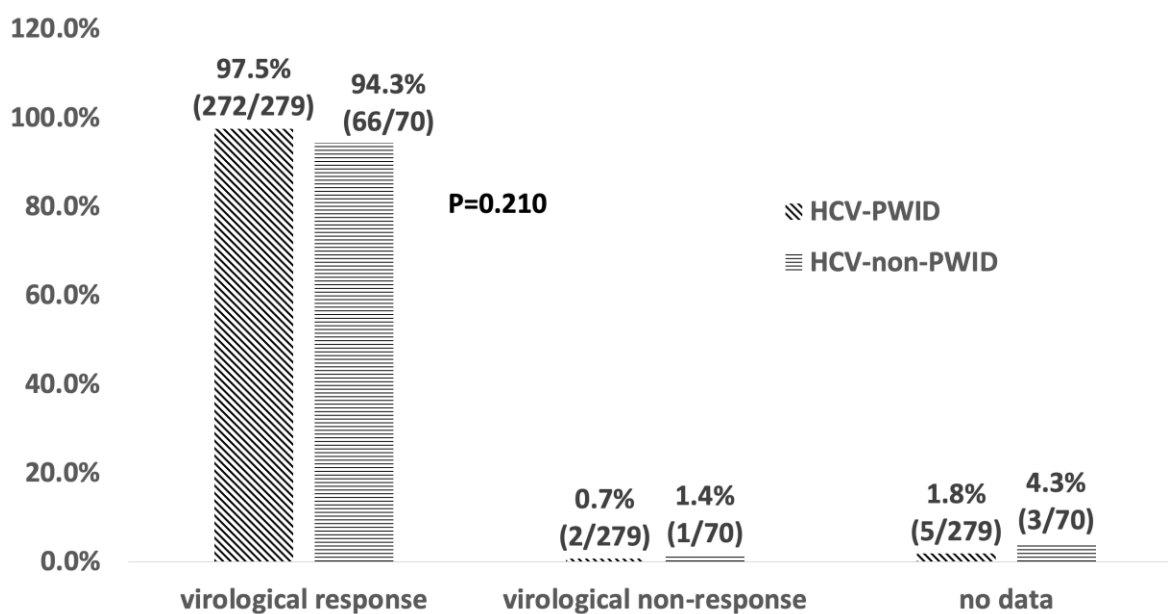
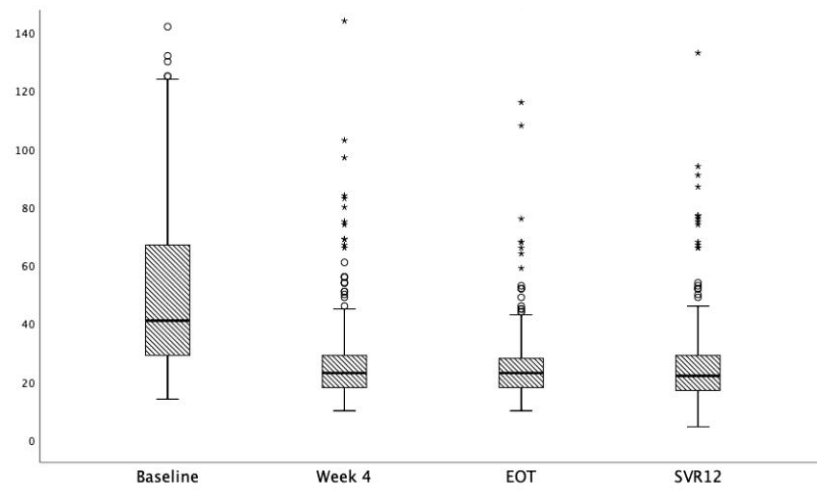


Supplementary Figure 1 Virologic responses at end of treatment stratified by SOF-based or SOF-free regimens. SOF: Sofosbuvir.

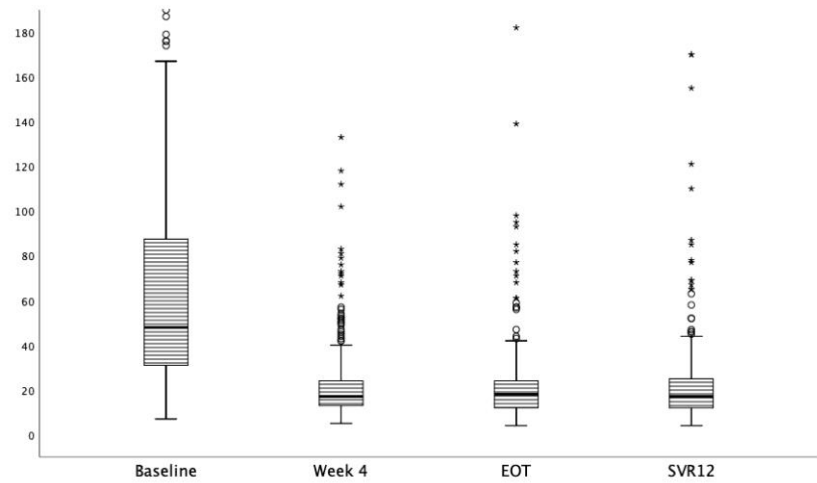


Supplementary Figure 2 Virologic responses at end of treatment stratified by transmission risk (PWID vs non-PWID) of hepatitis C virus infection. PWID: People who inject drugs; non-PWID: Non-people who inject drugs; HCV: Hepatitis C virus.

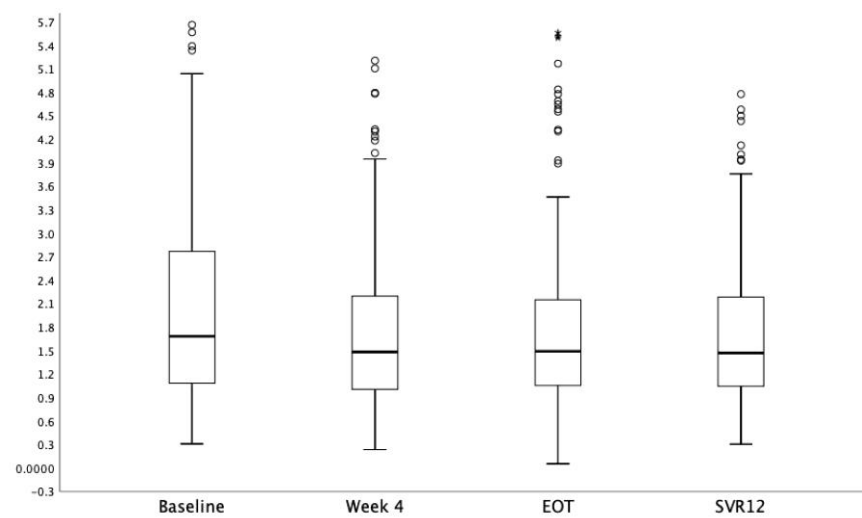
A



B

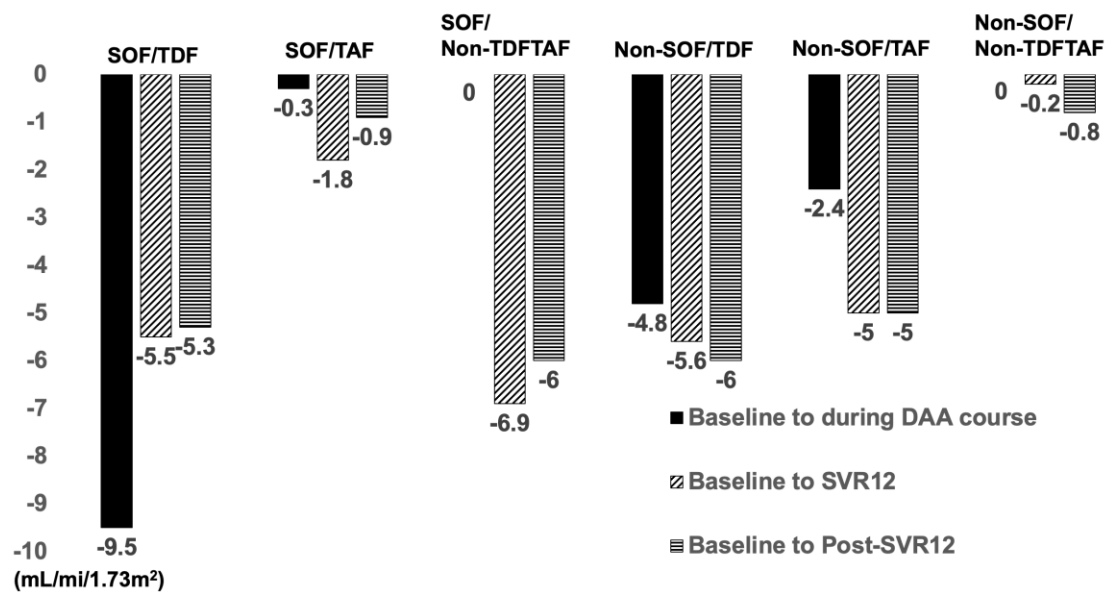


C

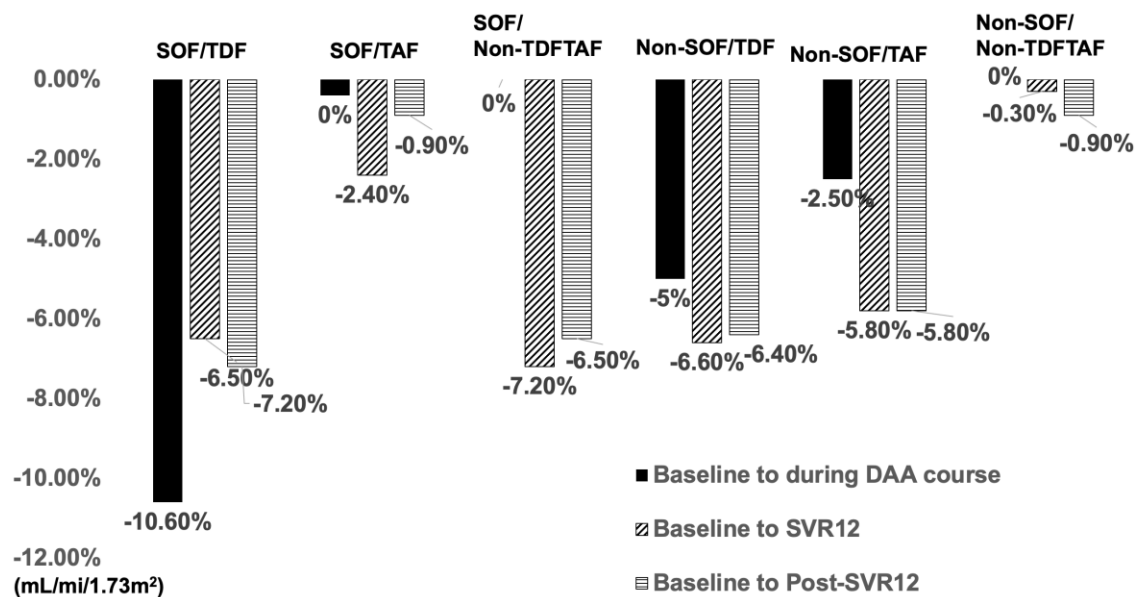


Supplementary Figure 3 Sequential changes of median (interquartile range) aspartate aminotransferase (U/L) (A), alanine aminotransferase (U/L) (B), and fibrosis-4 index (C) at baseline, week 4 of direct-acting antivirals (Week 4), EOT, and SVR12. EOT: End of treatment; SVR12: 12 wk off-therapy.

A



B



Supplementary Figure 4 The median changes (A) and percentage changes (B) of eGFR from baseline to during DAA course, SVR12, and post-SVR12 in patients receiving SOF/TDF, SOF/TAF, SOF/non-TDF/non-TAF, non-SOF/TDF, non-SOF/TAF, and non-SOF/non-TDF/non-TAF regimens. eGFR: Estimated glomerular filtration rate; DAA: Direct-acting antivirals; SVR12: Sustained virologic response 12 wk off-therapy; SOF: Sofosbuvir; TDF: Tenofovir disoproxil fumarate; TAF: Tenofovir alafenamide.