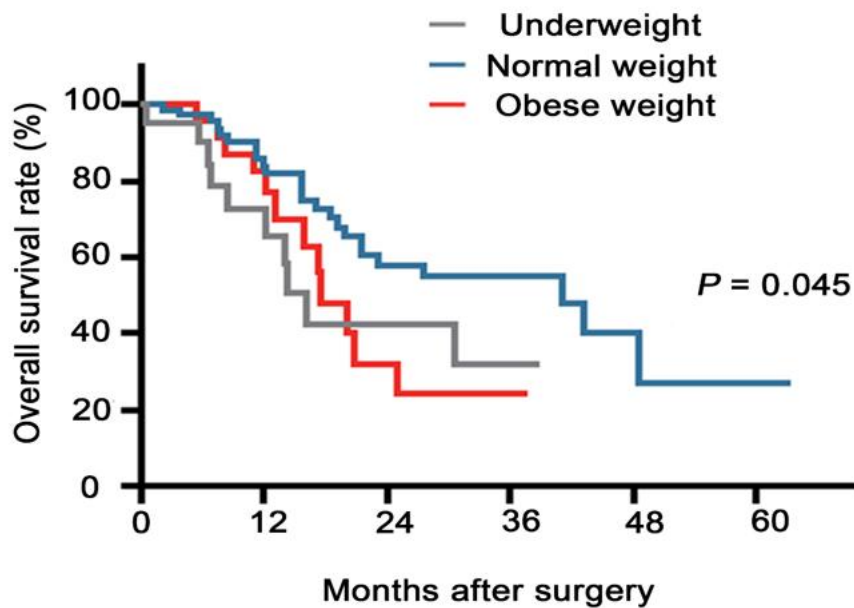
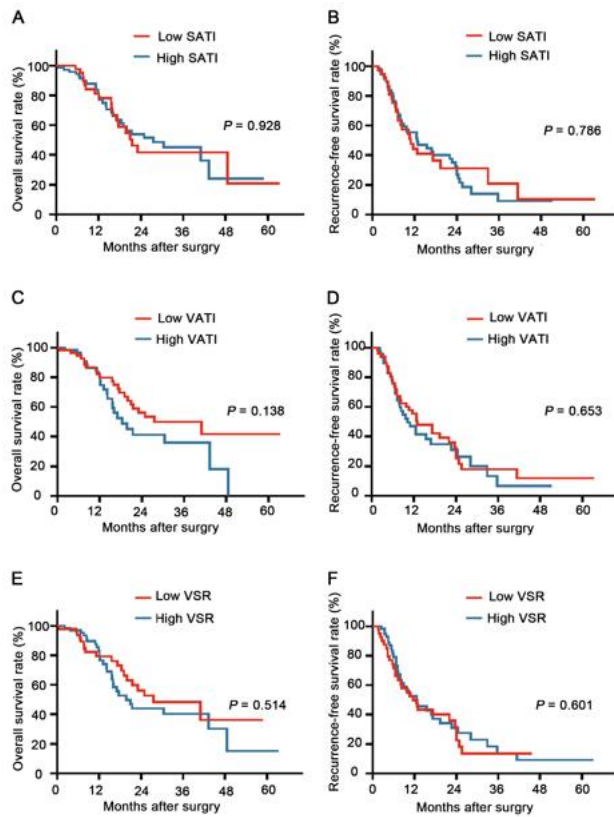


Supplementary material



DOI: 10.4240/wjgs.v0.i0.0000 Copyright ©The Author(s) 2022.

**Supplementary Figure 1 Effect of body mass index on the survival of patients with pancreatic cancer.** Obese and underweight statuses were associated with poor survival compared with normal weight patients. The median OS values were 21.48, 36.56, and 21.03 months for underweight, normal weight, and obese patients, respectively ( $P = 0.045$ ).



DOI: 10.4240/wjgs.v0.i0.0000 Copyright ©The Author(s) 2022.

**Supplementary Figure 2** Kaplan–Meier survival curves for overall survival and recurrence-free survival according to visceral adipose tissue index, subcutaneous adipose tissue index, and visceral to subcutaneous adipose tissue area ratio. SATI: Subcutaneous adipose tissue index; VATI: Visceral adipose tissue index; VSR: visceral to subcutaneous adipose tissue area ratio.